

Scale 1:36,000

Revised January 1, 2010

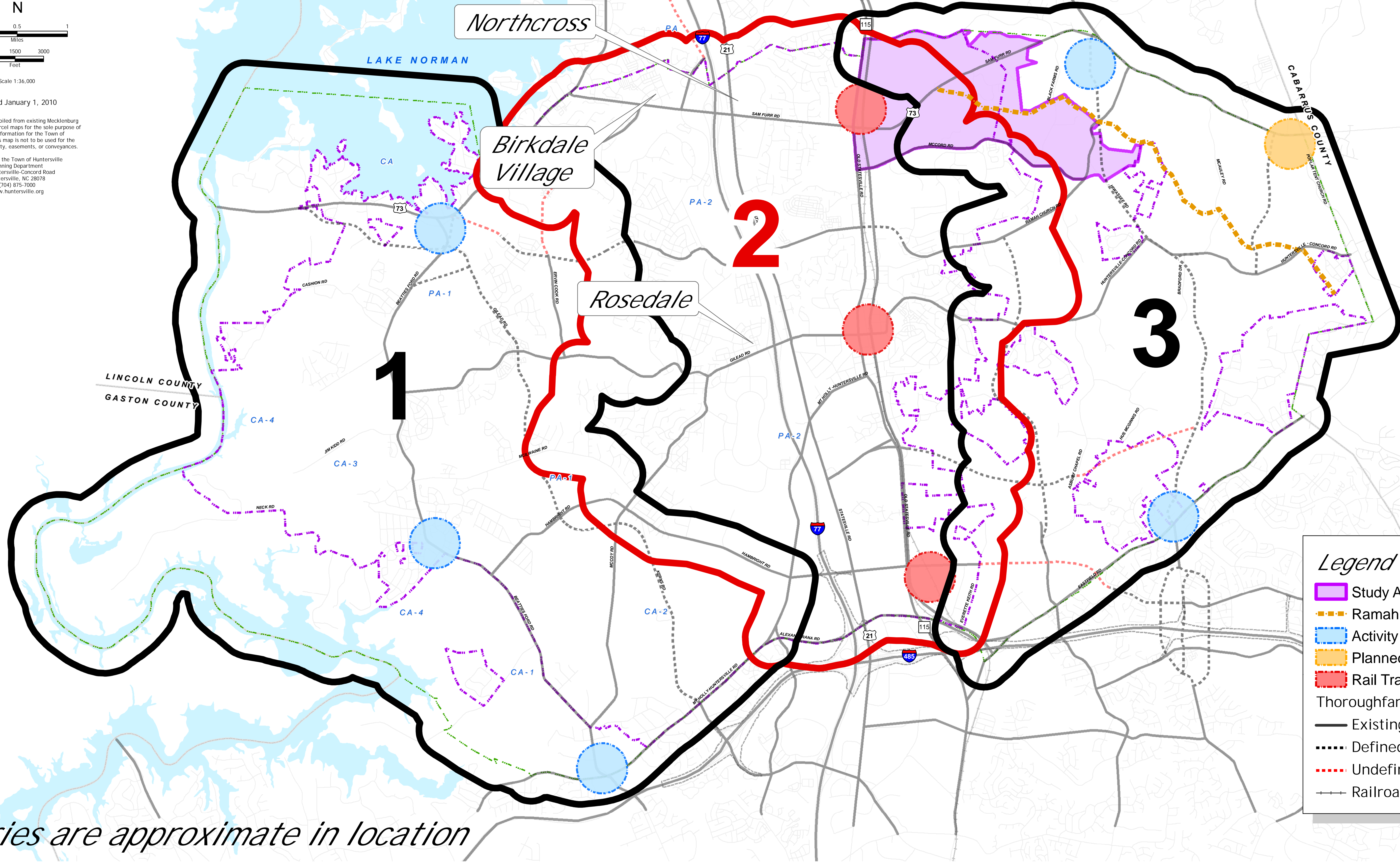
This map was compiled from existing Mecklenburg County property parcel maps for the sole purpose of presenting information for the Town of Huntersville. This map is not to be used for the transfer of property, easements, or conveyances.

Prepared by the Town of Huntersville  
Planning Department  
101 Huntersville-Concord Road  
Huntersville, NC 28078  
(704) 875-7000  
www.huntersville.org

# Lower Intensity (1)

# Higher Intensity (2)

# Lower Intensity (3)



**Legend**

- Study Area
- Ramah Creek Sewer
- Activity Area
- Planned Area
- Rail Transit
- Thoroughfares
  - Existing
  - Defined
  - Undefined
  - Railroad

*Boundaries are approximate in location*